

Mounting on Door

Some customers have mounted the LessMess on the Johnny House Door. This seem to work well and makes access easier. Make sure your door will hold the weight.

Important Notice:

These feeders are designed to minimize waste of feed and greatly reduce the labor of maintaining a Johnny House. They are not designed for use outside the Johnny House. The units hold about 20 pounds of commercial game bird feed that the birds cannot mess in. The water is very efficient also, no evaporation or algae growth. The result - Healthier Birds!!!

Note: To insure good feed flow in humid conditions we advise mixing a whole grain such as wheat or sorghum with the commercial feed.

Quality Wildlife Services, Inc.

234 Daybreak Road
Waynesboro, GA 30830

1-877-2HABITA(T)

1-877-242-2482

www.qualitywildlife.com

LessMess™

Johnny House Feed and Water System

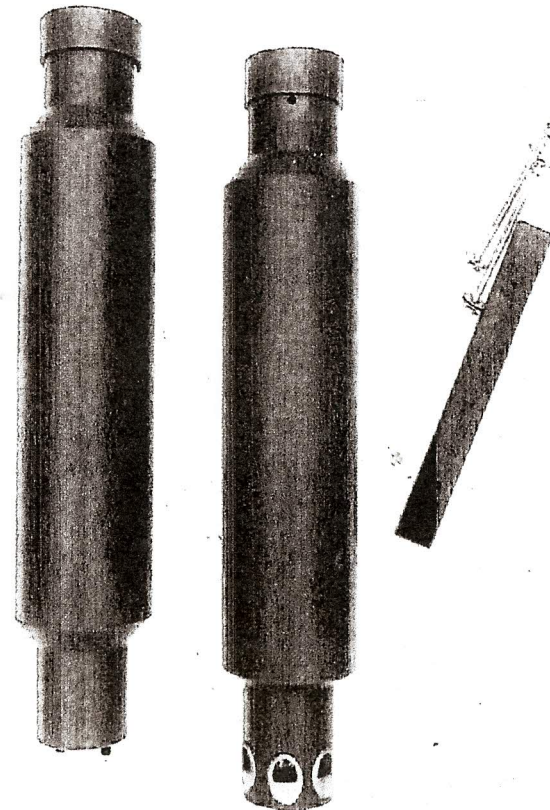


Diagram One

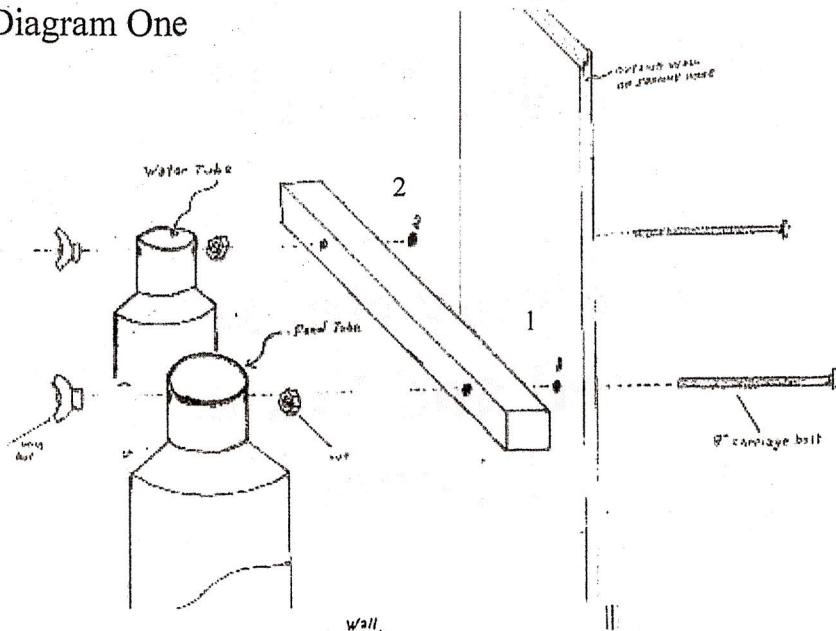
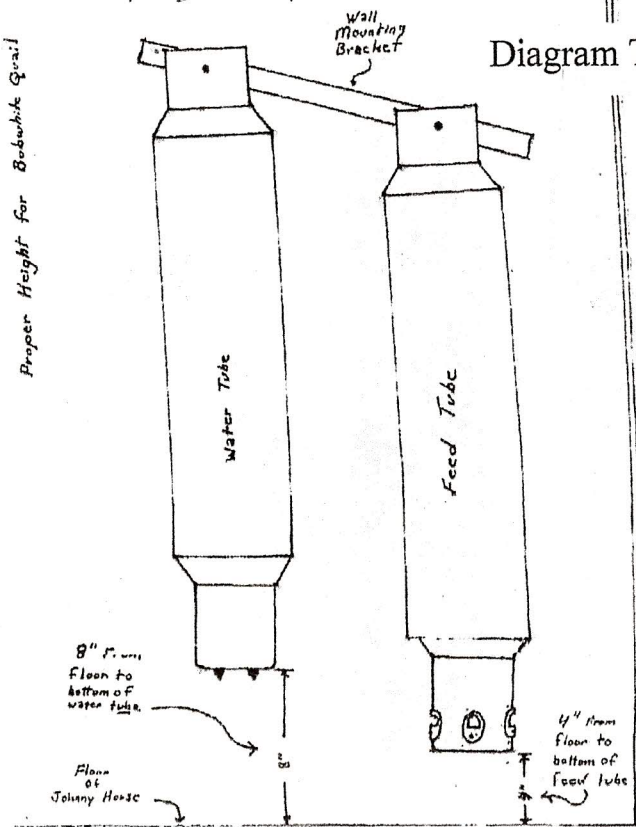


Diagram Two



Installation Instructions For Bobwhite Quail

- 1 Get a tape measure and locate a spot 34 1/2" from the floor level of the Johnny house. Be sure you are at least 6" from the edge of any near by adjacent walls. Now mark the spot and drill a 3/8" hole. ***** (This will be hole # 1 on diagram one.)
 - 2 Now insert the 8" carriage bolt from the outside of the Johnny House.
 - 3 Go inside at this point and guide the end of the bolt through one of the holes in the wooden mounting block.
 - 4 Put the flanged hex nut on bolt and snug against the mounting block.
 - 5 Now position the second hole in the wooden mounting block so that this hole is 37" from the floor. Mark the spot with a pencil by sticking it in the hole.
 - 6 Now drill out hole # 2 (see diagram one) and insert bolt , and flanged nut. Now tighten up both hex nuts.
 - 7 Next, slide feed tube on bolt # 1 and water tube on bolt # 2 and put on the second flat washer and wing nut.
- That's all there is to it.

If you have done this correctly you should find that the bottom of the feed tube is about 4 inches above the floor and the bottom of the water tube (not the nipple) is 8 inches above the floor.

NOTE: For Other Birds use the following measurements From the floor to the bottom of the tube.

*Bobwhite Quail	Feeder Ht. = 4 inches
or pigeons	Waterer Ht. = 8 inches
*Hungarian Part.	Feeder Ht. = 7 inches
	Waterer Ht. = 10 inches
*Chukar Part.	Feeder Ht. = 9 inches
	Waterer Ht. = 12 inches