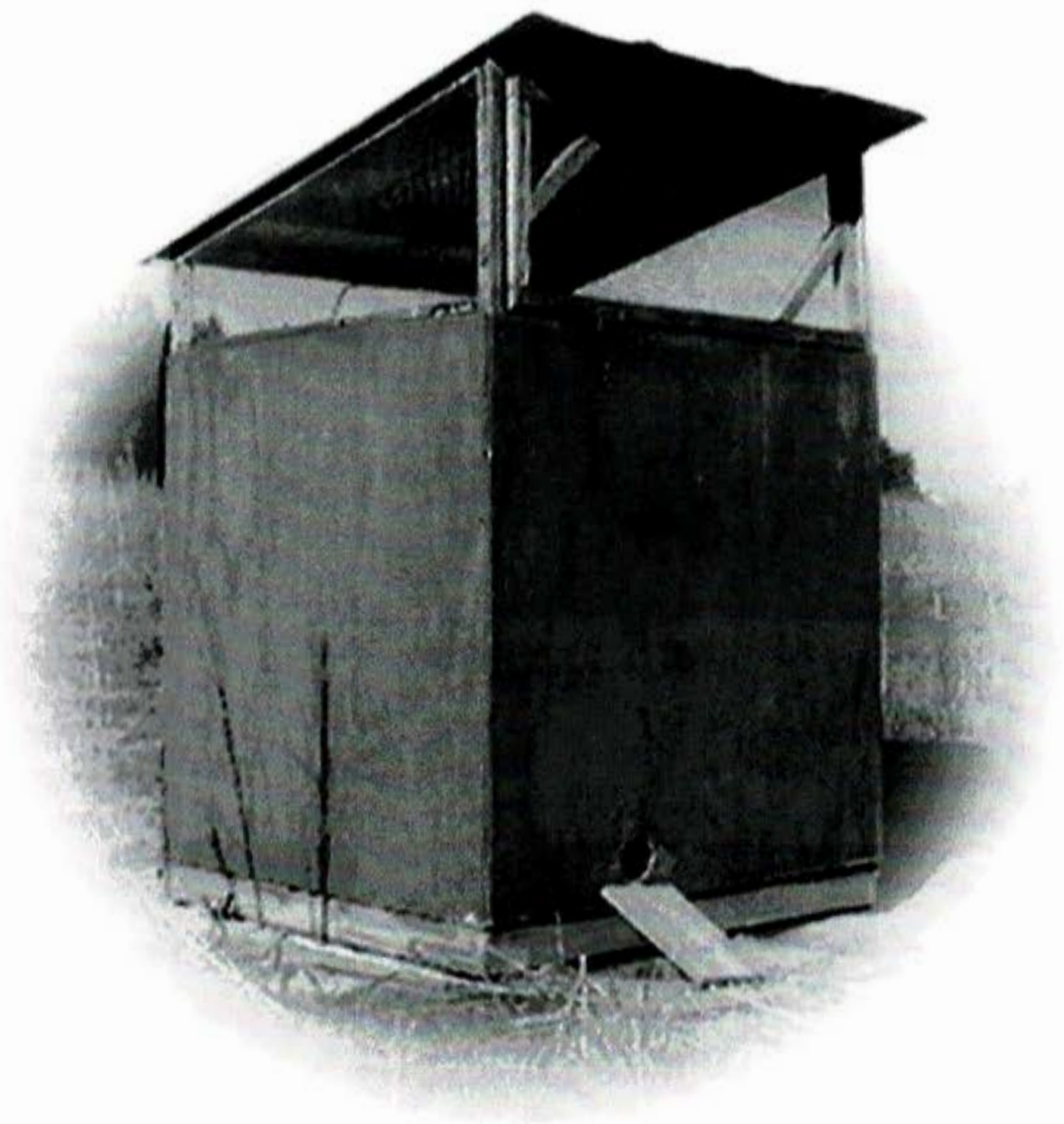


# **Quality Wildlife Services – Johnny House Plans**





# Johnny's House

by Jim Evans & Brad Jones

## A Home on the Range



When I was a youngster staying on "Uncle Jim's" rural farm in Virginia, the "Johnny house" was a place you ran to answer the call of nature. Back then, we rated them as one holers or two holers. If you train your own bird dogs, you are probably familiar with a different type of Johnny house, often referred to as a "recall pen."

The most common structures used are about four feet square and about six to eight feet tall. (Of course, in Texas they are twice this size.) The house has a screened-in top area and ledges for the quail to fly up to and sit on. Part of this screen area contains a door that can be lowered in order to let some or all of the birds out. The floor can be either solid plywood or hardware cloth. (I prefer a solid floor. We'll talk about this later.) There is also a one-way "catch funnel" located in the bottom of the house. This allows the quail to reenter the house, but not leave again.

The typical structure will hold 15 to 25 quail and can be set up in a small field. The objective is to keep the confined birds healthy and available until you are ready to work your dog. After you pick up your dog and leave the training area, the quail are recalled back to the Johnny house by the birds that were not released or with the assistance of a digital recall device.

dog training purposes. Training a dog to be steady on point or to honor another dog's point by "backing" requires having birds to work with. The Johnny house becomes the ready source for such birds. Quail can be manually caught and placed in a bird launcher or "dizzied" and placed in the field before the work begins. As the dog's training progresses, you can release all or part of the birds from the house by lowering the release door and letting them fly out into the field. Once you have watched to see which cover patches the quail land in, you can then go get your dog and begin working the field.

Another use for the house is to train a young bird hunter how to work the dogs and be a safe hunter. This is a more controlled setting that presents a youngster with enough action to keep him or her interested in learning the finer points of wingshooting.

If your quail hunting area is only large enough to have a few wild or early released coveys, then the Johnny house can be used to provide additional birds for the hunts. These additional birds will take some of the hunting pressure off your "premium coveys."



Inside the Johnny house, quail are protected from predators and extreme weather conditions.

Inside, the quail find protection from predators and extreme weather conditions. They also have feed and water to hold them over until you return. The ledges, located near the top of the house, help the birds maintain flight muscle strength as they fly from the floor up to the shelf. (Many people don't realize this, but most of the wing exercise is generated on the rise.) It is rare, but if you should have a small varmint get into the house through the funnel, the birds can fly up to the ledge to get away.

If you don't own a large piece of hunting land or the land you have access to is not close to where you live, then the Johnny house may be just what you need. The most common use of the house is to provide quail for

visual target to fly to as they leave the house.

Place the Johnny house out in the field away from any rank or unhuntable thickets. The goal here is to make sure when the birds are released, that they don't peel off into the jungle, but rather they fly out into the work area.

Once the house is set in position, you can place some light brush tops around the funnel entrance on the outside of the house. This will give the returning quail some concealment cover as they mill around the funnel entrance.

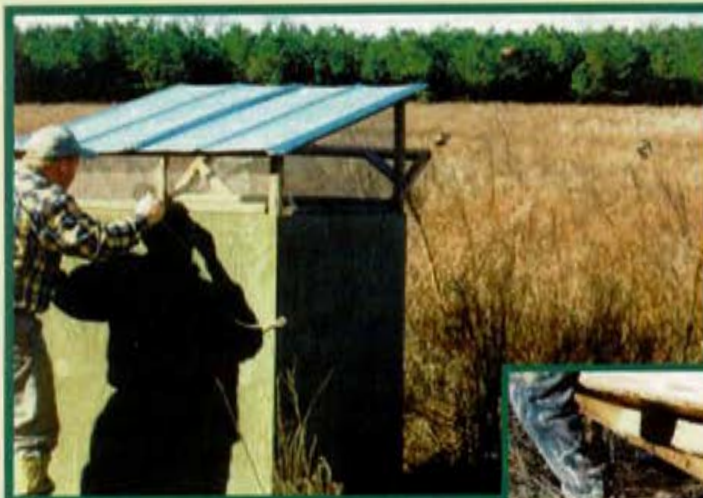
### GETTING STARTED

Of course, the first thing you need to do is build the Johnny house. Plans are available from several catalogs that sell dog-training supplies. The plans used in this article are available from Quality Wildlife Services, Inc.

### Site Location

The field setting for the house should be good quail habitat. A field of fescue or Bermuda grass will not work. Instead, find a field dominated by native grasses and weeds along with scattered small patches of "heavy cover" such as briars or small shrubs. If you are able, it is also a good idea to add a few scattered food plots of Egyptian wheat or sorghum to the setting. This gives the quail a





sand and hay. Then I replace it with clean sand and put a double handful of hay to one of the corners.

At the beginning of the season, it is a good idea to get a block of "bar bait" and place it underneath the house. Bar bait is a waxy block that contains a grain treated with rat poison. This can be purchased from your local feed and seed store. Repeat this when you perform your mid-season cleaning.

During this article I have used quail as the focus species. However, Hungarian partridge and Chukar partridge "recall" very well also. In very harsh northern climates, you may find it more to your benefit to use one of these species. The only changes you would have to make on the house

*When releasing birds, notice that wherever the first bird goes, the rest want to follow. Leave at least one or two birds in the house to give the returning birds a stronger desire to get back inside.*

would be to increase the funnel dimensions accordingly. For instance, the standard quail funnel is 14 inches long and is four inches in diameter at one end and three inches in diameter at the other. For Huns and chukars, the funnel would be six inches in diameter at one end and four inches in diameter at the other.

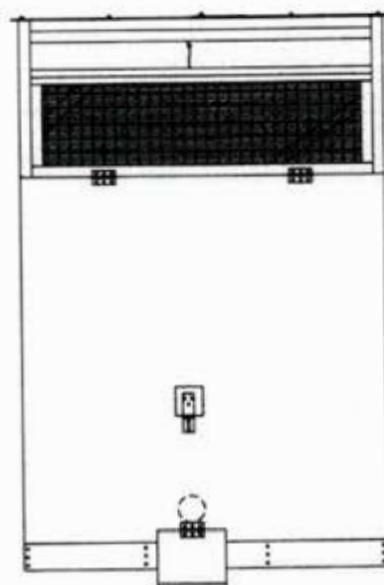
The other equipment is easily adapted as well. If you use a LessMess feeding system, the directions will tell you the proper height for each species of bird. The Total Recall (electronic recall device) is also available in both the Hungarian and Chukar partridge.

Recall pens are not for everyone. However, if your time and space are limited, a Johnny house may be the way you can keep some birds "home on the range."

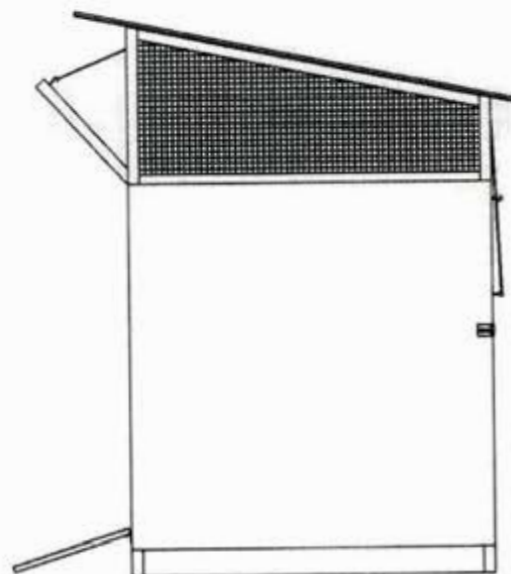


*At the beginning of the season, get a block of "bar bait" and place it underneath the house. Bar bait is a waxy block that contains a grain treated with rat poison.*

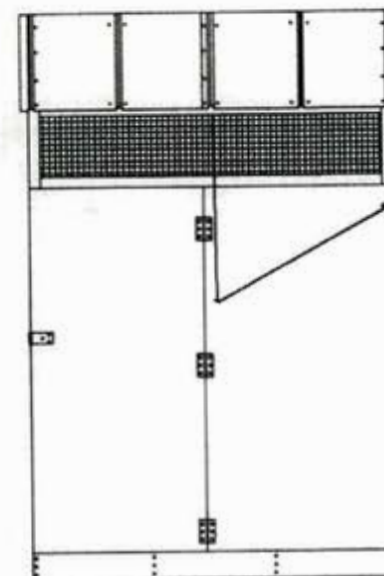
For more information about Johnny house plans or the equipment mentioned in this article, contact Quality Wildlife Services at (877) 242-2482 or visit their website at [www.qualitywildlife.com](http://www.qualitywildlife.com).



FRONT



RIGHT SIDE



REAR

### MATERIALS LIST:

- 6 EA. - 3' x 1 1/2' BUTT HINGES
- 8 FT. - ROPE OR HEAVY TWINE
- 1 EA. - 1" WHEEL PULLEY
- 2 EA. - 3" HASP
- 3 SHT - 4' x 8' x 1/2" PRESSURE TREATED PLYWOOD
- 2 EA. - 26" x 60" CORRUGATED TIN ROOFING
- 12 EA. - 2" x 4' x 8' PRESSURE TREATED SOUTHERN YELLOW PINE
- 2 EA. - 5/4" x 6' x 8' PRESSURE TREATED SYP DECKING BOARD
- 1 EA. - 40' x 12' - 1/2" HARDWARE CLOTH
- 1 EA. - HANGING BASKET HOLDER (TO SUPPORT RECALL FUNNEL)
- 4 lbs - 1" GALVANIZED DECKING SCREWS
- 2 lbs - 2 1/2" GALVANIZED DECKING SCREWS
- 2 lbs - 3/4" POULTRY STAPLES
- 1 lbs - GASKETED GALVANIZED ROOFING NAILS
- 5 EA. - 1/2" EYEBOLTS w/ WOOD SCREW THREADED ENDS

### **NOTE:**

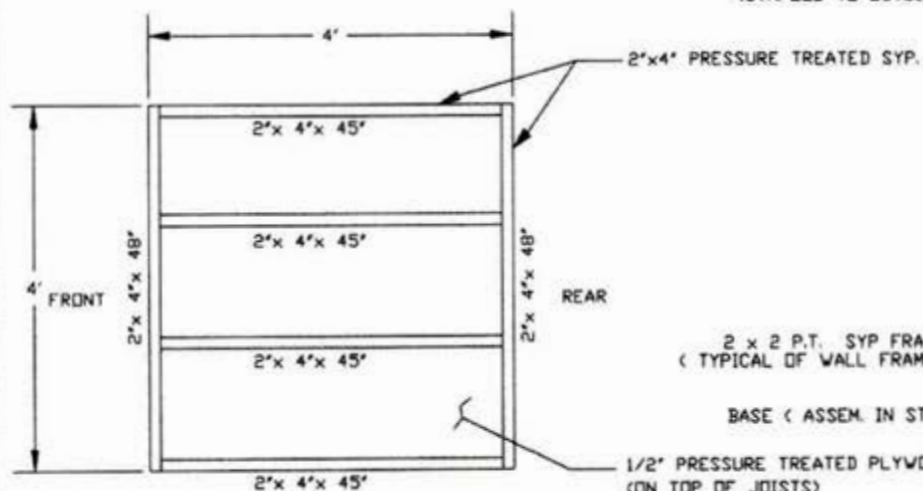
Some of the 12 ( two by fours) will be ripped into two by two's. If you are buying the material as 2x2's to start with, purchase 18 pcs. 8 feet long.

PROJECT

**QUAIL HOUSE**

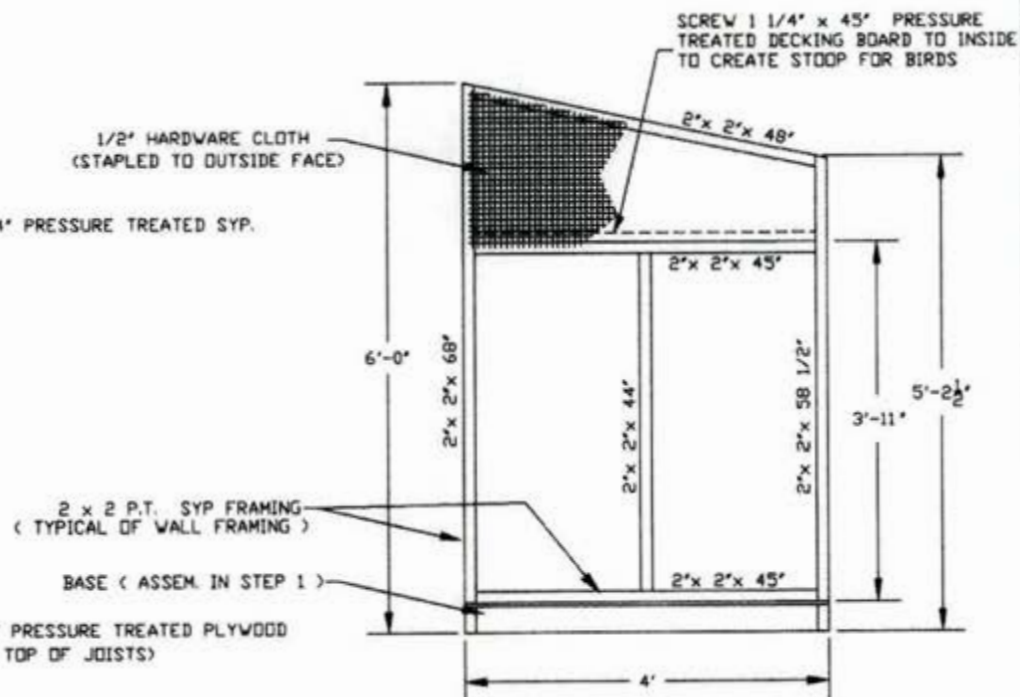
SHEET NUMBER

**1**



### STEP 1 - THE BASE

ASSEMBLE 2 x 4 BASE MEMBERS AS SHOWN AND COVER TOP WITH 1/2" PRESSURE TREATED PLYWOOD. ATTACH WITH 1-1/4" GALVANIZED DECKING SCREWS 8" ON CENTER.



### STEP 2 - RIGHT AND LEFT SIDES

ASSEMBLE RIGHT AND LEFT FRAMES AS SHOWN AND ATTACH TO OUTSIDE EDGES OF PRE-ASSEMBLED BASE WITH 2 1/2" GALVANIZED DECKING SCREWS.

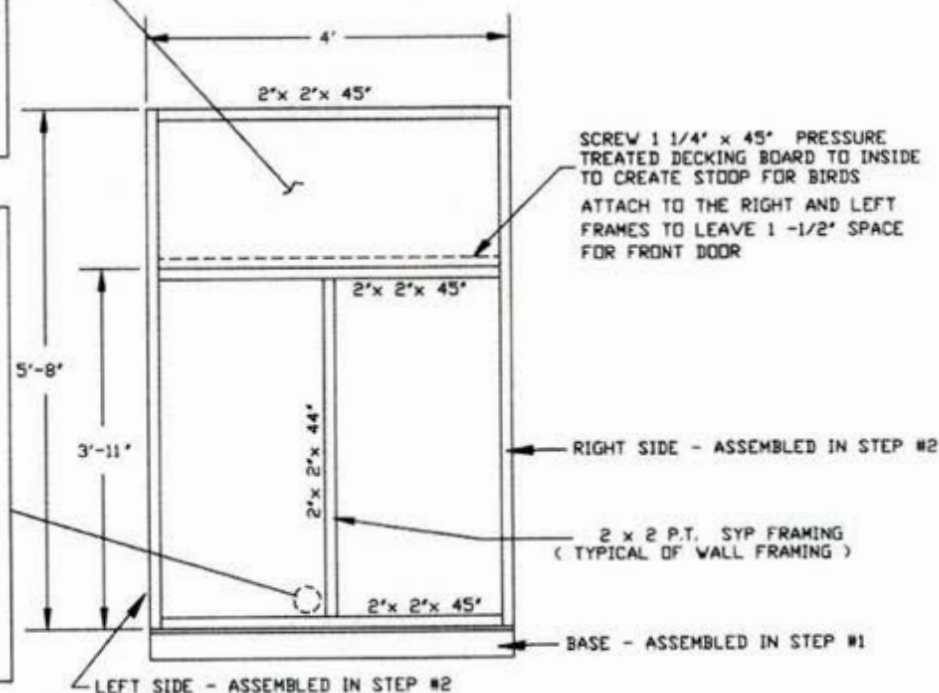
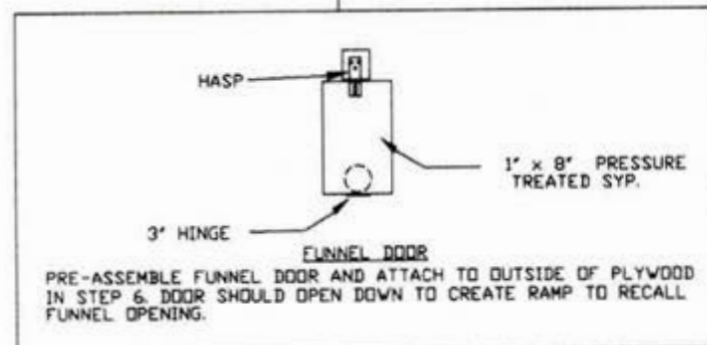
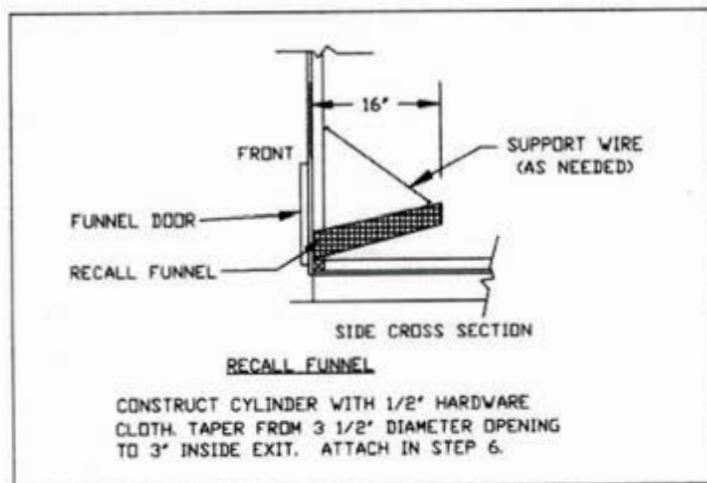
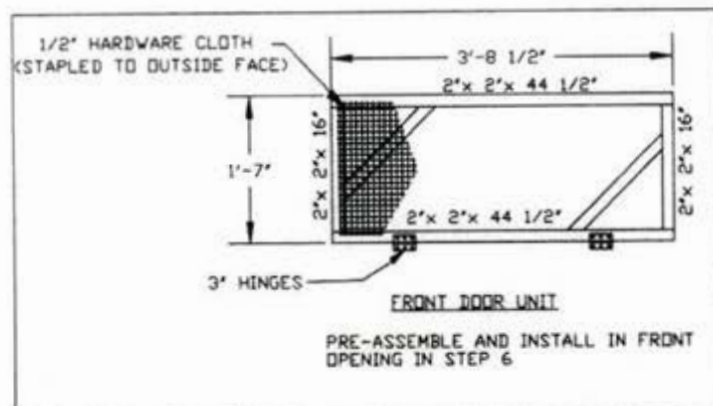
PROJECT

QUAIL HOUSE

SHEET NUMBER

2





### STEP 3 - FRONT WALL

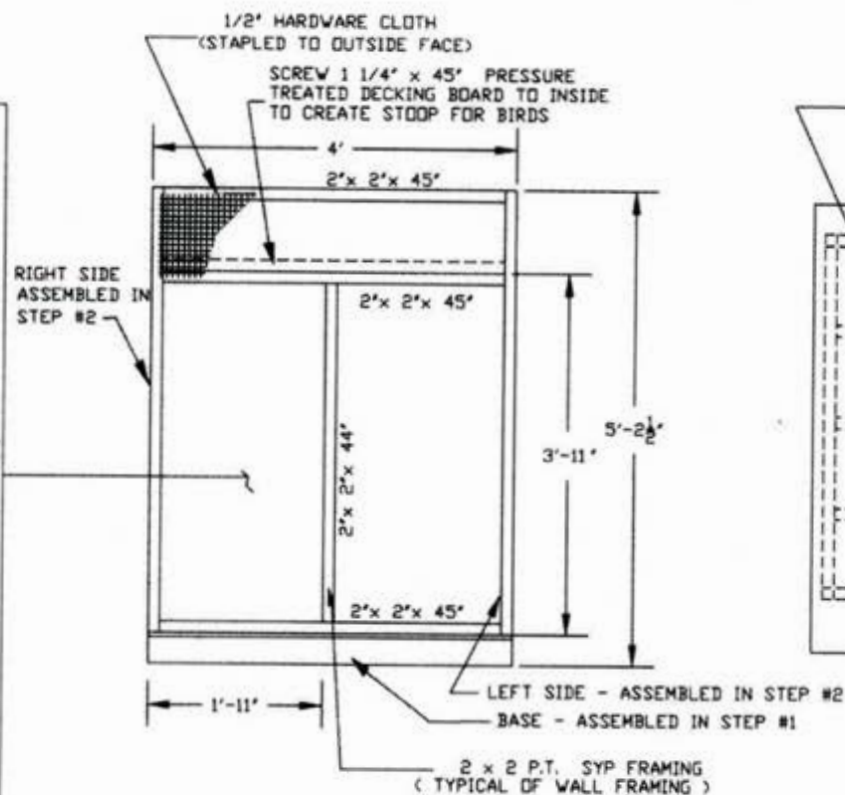
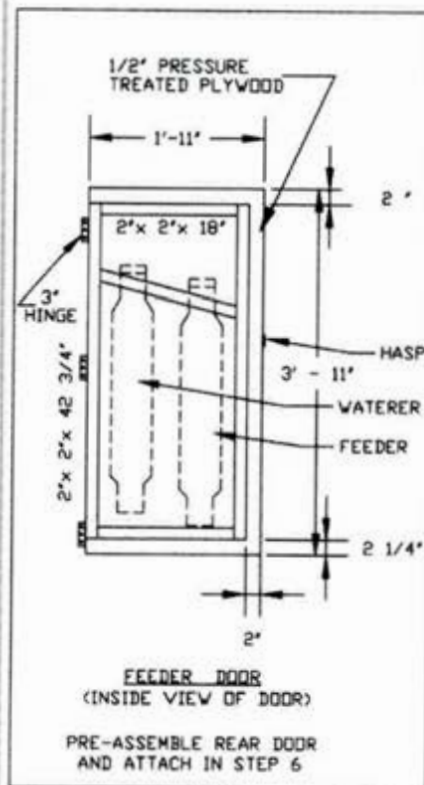
WITH THE RIGHT AND LEFT SIDES COMPLETE AND ATTACHED TO THE BASE, FILL IN FRONT 2' x 2' FRAMING AS SHOWN.

PROJECT

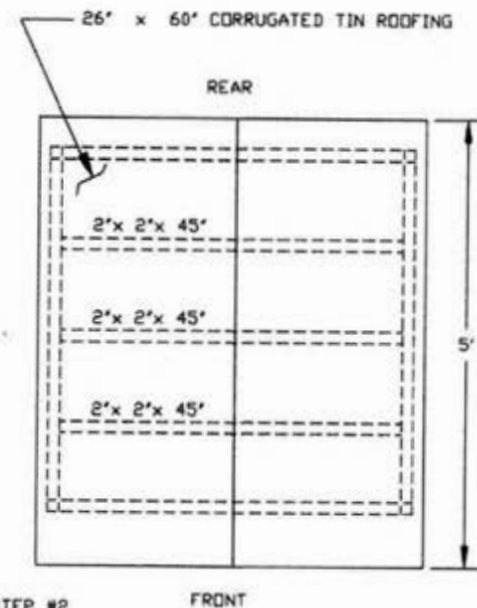
QUAIL HOUSE

SHEET NUMBER

3



**STEP 4 - REAR WALL**  
FILL IN FRAMING AT REAR AS SHOWN (SIMILAR TO STEP 3)



**STEP 5 - ROOF**

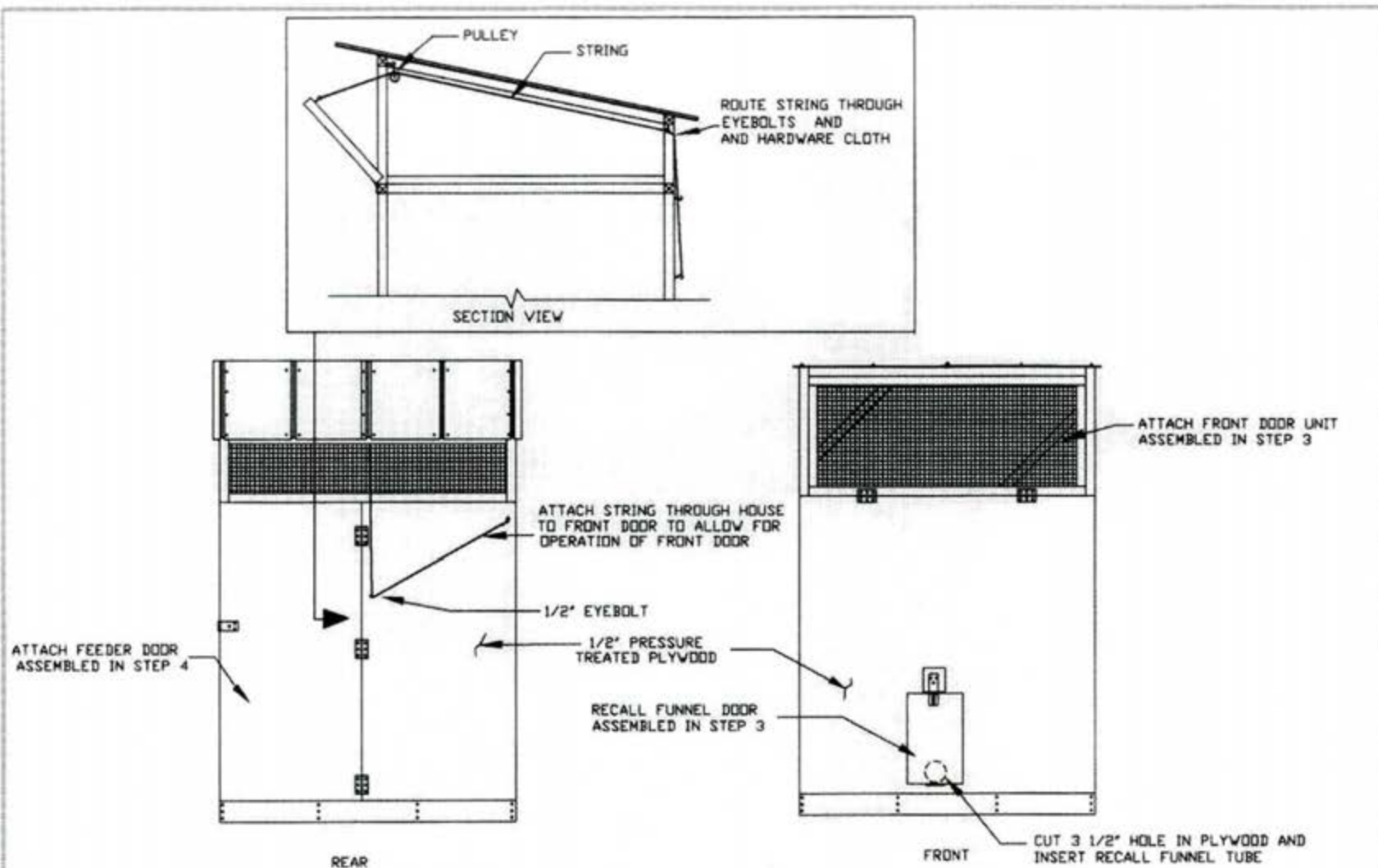
INSTALL THREE 2 x 2 RAFTERS AT 12' o.c. AND COVER TOP FRAMING BY ATTACHING CORRUGATED METAL ROOFING WITH GASKETED ROOFING NAILS.

PROJECT

QUAIL HOUSE

SHEET NUMBER

4



## STEP 6 - SIDING AND FINAL ASSEMBLY

INSTALL 1/2" SIDING ON ALL FOUR SIDES AS SHOWN. COMPLETE BY ATTACHING FRONT AND REAR DOORS, RECALL FUNNEL, RECALL FUNNEL DOOR AND OTHER MISC. HARDWARE

PROJECT

QUAIL HOUSE

SHEET NUMBER

5



# Jaggars Quail Funnel

-keep PREDATORS OUT for less \$

Where ever you have quail, you will have things that eat quail.

KEEP THEM OUT with a new device that costs as little  
as a few good birds.

The Jaggars Quail Funnel attaches easily to a Johnny House,  
recall pen or Phantom Kennel.

First developed by WL Jaggars for the Phantom Kennel, this bird saving  
gizmo uses spring tension to allow the quail to enter while closing to block  
out heavier predators. It is set specifically for Northern Bobwhite Quail.



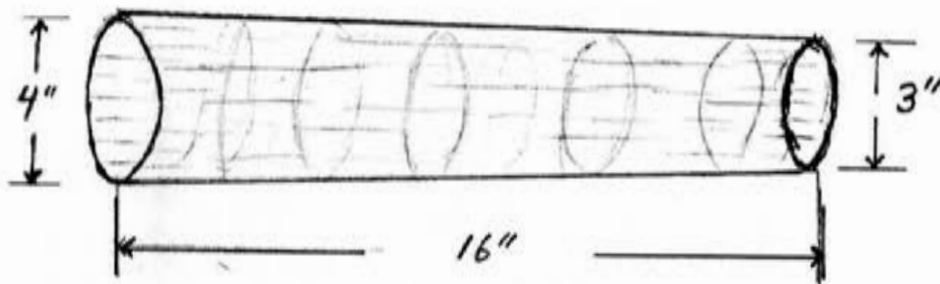
Jaggars Quail Funnel \$75  
Or buy 2 for \$135

AVAILABLE FROM:  
Quality Wildlife Services  
234 Daybreak Rd.  
Waynesboro, Ga 30830

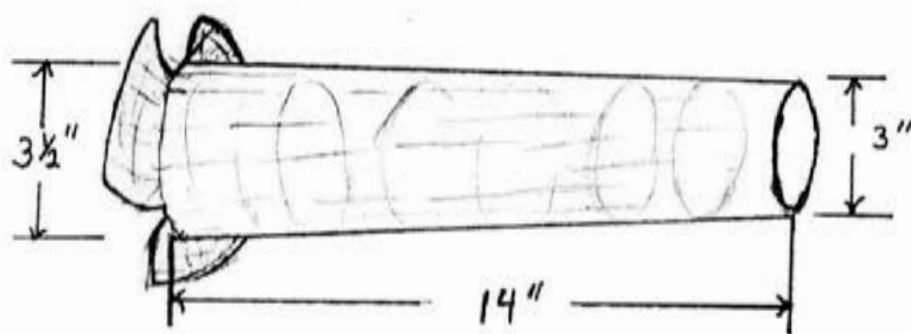
[www.qualitywildlife.com](http://www.qualitywildlife.com)  
877-242-2482

### Recall Funnel for Quail

- Using a 16-inch long piece of  $\frac{1}{2}$  inch hardware cloth, construct a funnel that is 4 inches wide at one end and 3 inches wide at the other end. The funnel can be secured with J-clips purchased from G. Q. F. Manufacturing. You can call them for a catalog at (912)-236-0651.



- Now, at the 4-inch end, cut three slots 2 inches deep to create "three ears" of wire to attach the funnel to the house. This should result in having a finished funnel about 14 inches long with an entrance hole about  $3\frac{1}{2}$  inches wide. Now insert the funnel into the house from the outside until the wire ears are against the wood. Secure with wire staples.



#### NOTE:

- If you would like to purchase a pre-made funnel you can order one from Lion Country Supply (1-800-662-5202).



## **Tips on How to Manage Your Johnny House**

### **Preparation**

- Before you put any birds in the house, place about one and one half to two inches of sand in the floor of the house. The quail use the sand to preen and clean their feathers much like you take a bath. The sand also absorbs the moisture from their droppings and makes for a more sanitary environment. This is why I put a solid floor in my Johnny Houses.
- During extremely cold weather I place a wad of hay about the size of a bed pillow in a corner of the house to give the birds a warm place to roost.
- I usually do a little house cleaning about half way through the winter. I do this when I have released the birds from the house. Just use an old square point shovel with the handle cut off short. Scoop out the old sand and put in fresh sand. Add fresh hay if the weather calls for it.
- To keep mice from moving in under the house, I tilt up one side of the house and put a block of "bar bait" underneath the structure. Bar bait is a waxy block that contains a grain treated with rat poison. This can be purchased from your local feed and seed or farm coop.

### **Managing your Birds**

- When you first put your quail in the house - feed them in through the funnel.
- Leave the quail in the house about five or six days then release about one third of the group. Once most of them have returned, repeat this process at least two more times.
- If you are using a Total Recall you can now release the entire group and hang the caller on the front of the Johnny house. The Total Recall will recall the birds to the house.
- With 20-25 quail in the house you will want to check the LessMess feeder and waterer every two weeks especially if you are not letting them out much.





## Keep your Johnny House clean...

The new **LessMess™** feeder/waterer system cuts down on maintenance hassles, letting you spend more time with your dogs

### **LessMess™ Feeder**

- Tired of Johnny House cleanup? Our new, low-maintenance system suspends food at the right height
- Unique feeding ports effectively deliver bird-grower food without spilling
- Generously sized to hold a large volume of food
- Off-the-floor design prevents birds from "fouling" their feed
- For use in protected areas only
- Works for quail, pigeons, chukar, huns...

### **LessMess™ Waterer**

- Innovative nipple delivery system; birds take water like they're nipping dew from leaves
- Fully-enclosed rotary-molded tube minimizes evaporation
- One filling lasts a long time reducing maintenance time

To order your LessMess™ system  
call **Quality Wildlife Services**  
at 1-877-2HABITA[T] (1-877-242-2482)  
[www.qualitywildlife.com](http://www.qualitywildlife.com)



## Call them home

with Total Recall™...  
the electronic alternative  
to live call birds



The total Recall™ Electronic Call Bird-  
designed for put and take operations,  
dog trainers and hunters establishing  
pre-season release coveys  
This innovative, photocell  
activated unit automatically  
simulates the "covey-up" call  
at key periods of the day.

**Total Recall™ keeps birds anchored  
at your release site better than a  
live call bird because it doesn't  
attract predators like a pacing,  
scent-producing bird.**

This "electronic call bird" runs for 4 - 6  
weeks off a single 9 volt alkaline battery,  
or 20 weeks with 8 AA batteries. Also,  
for added volume, an external jack has been located at the bottom of the  
speaker that can be used to attach an optional power horn speaker.



call **Quality Wildlife Services**  
at 1-877-2HABITAT (1-877-242-2482)  
[www.qualitywildlife.com](http://www.qualitywildlife.com)



# Stress Pak Powder



**The Stress Pak powder is added to the drinking water in Johnny Houses, pigeon coops, and quail holding pens.**

This product reduces health risks encountered by quail when they are under any form of stress from shipping or being confined. It also improves the quality of the drinking water, and keeps a nipple water system clean and free from mineral build up.

Available from Quality Wildlife Services, Inc.  
1/2 pound pack treats 128 gallons of water

Contact Quality Wildlife Services  
at 1-877-2HABITAT (1-877-242-2482)  
or visits them online at [www.qualitywildlife.com](http://www.qualitywildlife.com)

# JOHNNY HOUSES FOR QUAIL



**the latest DVD from Daybreak Productions,  
produced for Quality Wildlife Services**



*Jim Evans*

In this DVD, field biologist Jim Evans shows how the Johnny House or recall pen works with quail.

If you do not have a large piece of land on which to hunt or to train your bird dog, then the Johnny House may be just what you need for hours of great fun.

To order your Johnny Houses for Quail  
Contact Quality Wildlife Services  
at 1-877-2HABITAT (1-877-242-2482)  
[www.qualitywildlife.com](http://www.qualitywildlife.com)